

CAMPEONATO PANAMERICANO

DHI 20 26

SAPIRANGA | BRASIL

ATHLETE'S GUIDE

March 5th, 6th, 7th and 8th, 2026

REALIZATION:



Prefeitura Municipal de
SAPIRANGA
Cidade das Rosas e do Voo Livre

OFFICIALIZATION:



Villa Paiva | Morro Ferrabrás



SAPIRANGA - RS

Presentation:

The **Brazilian Cycling Confederation** (CBC), in partnership with the **Pan American Cycling Confederation** (COPACI), the **Sapiranga Sports Department**, and the **Gaúcho Cycling Federation** (FGC), are pleased to invite all countries from across the continent to take part in the 2026 Pan American MTB Downhill Championship.

The event will be held from **March 5 to 8**, 2026, in the city of **Sapiranga**, Rio Grande do Sul, Brazil.



General information about the competition venue:

Host city of the upcoming Pan American Mountain Bike Downhill Championship, **Sapiranga**, located in the state of Rio Grande do Sul, is widely recognized for its **strong tradition** in hosting events of the discipline.

The municipality offers **attractions** that cover various segments of **tourism**, including leisure areas, waterfalls, rivers, ecological reserves, remnants of native forest, endangered wildlife species, and sites of significant environmental value.

To the north of the city lies **Morro Ferrabraz**, with an altitude of **779 meters**, approximately 634 meters above sea level. The area is highly sought after for adventure sports and has hosted **several important** national and international competitions. Its stunning natural landscape attracts visitors seeking direct contact with nature, even while remaining close to major urban centers.

Due to its geographical features, infrastructure, and sporting tradition, Sapiranga stands out as the **ideal setting** for the realization of this major continental event.





Important:



This Regulation is subject to **updates**. In the event of any **discrepancy** or **conflict of interpretation**, the version published at the Event Secretariat, after the Technical Congress, written in **English**, shall prevail and be considered the official and final version for resolving any questions.

By registering and participating in the event, athletes **expressly acknowledge** and accept this Guide, as well as the Regulations of the **Brazilian Cycling Confederation** (CBC) and the **Union Cycliste Internationale** (UCI), including all applicable rules, sanctions, and penalties.

Uniform (Unofficial):

The use of a **national team** uniform will **not be required** for athletes competing in the **unofficial categories**.

Registrations and Delegations:

The amount of **US\$ 80.00** must be paid at the time of confirmation, in **cash only**.

The official list of athletes from each country must be submitted by the respective National Federation to

radicalsports0@gmail.com

no later than February 28, and must include the following information for each participant:

- Full name;
- Date of birth;
- Passport number;
- UCI ID;
- Proof of **international insurance coverage** for sporting events, valid for the entire duration of the competition.

All athletes must present a current and **valid license** issued by their respective National Cycling Federation.

Each delegation shall be fully **responsible** for its airfare, accommodation, meals, transportation, vehicles, and any other expenses related to participation in the event.

The **team official** must present, at the time of confirmation, the **official team list** on letterhead, **duly signed** by the corresponding federation, as well as each athlete's **current license**, international **insurance policy**, and passport.

*Each delegation must bring its respective **national flag**.*

Included Services:

The organization will provide first aid assistance in the event of accidents during the competition.

- **Hospital Sapiranga** – Rua Getúlio Vargas, 527 – Centro | Tel.: +55 (51) 3599-8100 ;
- **UPA Sapiranga** – Av. Mauá 3810 – Centenário | Tel.:+55 (51) 3959-1058 ;

Points:

- **UCI Points** – Points will be awarded in accordance with the current Union Cycliste Internationale (UCI) Regulations.
- **CBC Points** – Points will be awarded according to the current points table of the Brazilian Cycling Confederation (CBC).

Mandatory Protective Equipment:

The use of the following safety equipment is mandatory during the competition:

- **Full-face helmet;**
- **Chest and back protector;**
- **Elbow and knee pads made of rigid material;**
- **Full-finger gloves**

Uniform:

The use of the **official** national team uniform is **mandatory** for athletes registered in the **official** categories.

National uniforms **will be required** only during the Time Trial and the Final of the official categories.

For the podium ceremony, athletes must wear the **complete national uniform** and maintain proper **sporting conduct**.

Athletes **will not be allowed** to step onto the podium with signs, banners, or any sponsor-related promotional materials.

Requirements:

Each athlete must hold a **valid UCI 2026 license** issued by the national federation they represent, as well as a passport or **official** photo identification document.

The Regulations of the Brazilian Cycling Confederation (CBC) and the Union Cycliste Internationale (UCI) shall **apply in full** from the moment the athlete enters the race circuit or any official competition area.

Athletes are expected to maintain **exemplary conduct** throughout the official schedule and in common areas, including the circuit, hotels, bars, and restaurants within the city.

To train on the circuit during the official training period, athletes must have **completed registration confirmation** and must display the official number plate on the bicycle at all times.

The organization shall **not be responsible** for payments related to services, accommodation, or any personal expenses incurred by athletes or delegations.

Currency:

The official currency of Brazil is the Real, represented by the symbol **R\$**.

Voltage and Plug Type:

The standard electrical voltage in Brazil is **220 volts**.

The country uses a **three-pin** plug system, with a bipolar plug and grounding.

Business Hours:

Most commercial establishments operate from 9:00 a.m. to 6:00 p.m.

Bars and restaurants generally close between 11:00 p.m. and midnight.

Urban Characteristics and Local Transportation:

The municipality seeks to ensure efficient, safe, and well-organized **urban circulation**, promoting harmonious coexistence among drivers, motorcyclists, cyclists, and pedestrians, in accordance with the Brazilian Traffic Code.

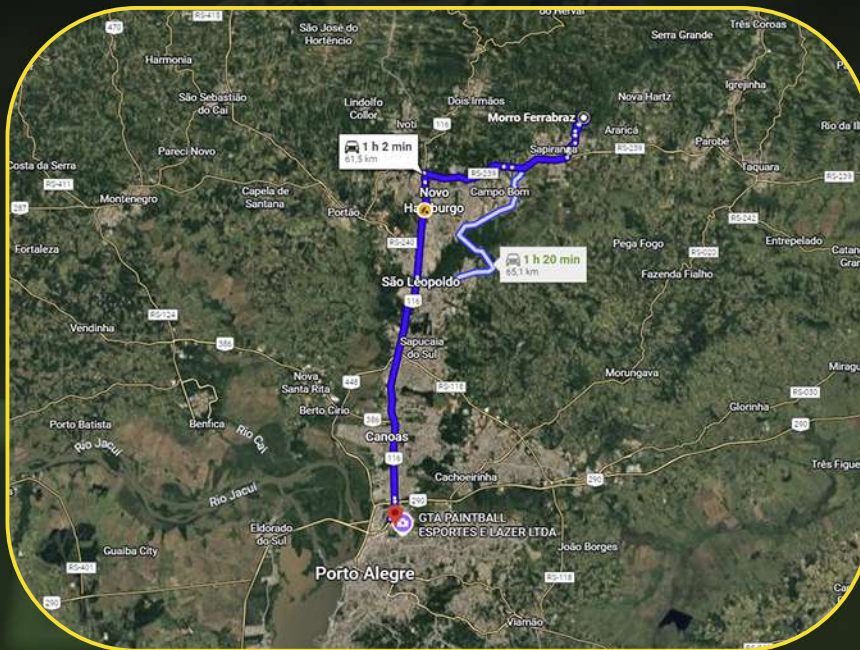
The city offers **public transportation** (buses), as well as **taxis** and **ride-hailing services** such as Uber and 99, facilitating local mobility for residents and visitors.

Airport:

The Porto Alegre International Airport – Salgado Filho is the closest and most convenient airport for access to the city of Sapiiranga.

Address: Av. Severo Dullius, nº 90.010 – Bairro São João, Porto Alegre – RS, CEP 90200-310

Phone: +55 (51) 3358-2000



Climate:

In the municipality of Sapiiranga, during the month of March, temperatures typically range between 17 °C and 32 °C. This period marks the transition from summer to autumn, resulting in generally mild weather, although it can still be warm during the daytime.

**CAMPEONATO
PANAMERICANO**

**DHI 20
26**

SAPIRANGA | BRASIL

EVENT

TECHNICAL REGULATIONS

OFFICIALIZATION:

COPACI
PAN AMERICAN
CYCLING
CONFEDERATION



CBC
CICLISMO BRASIL

UCI



Villa Paiva | Morro Ferrabráz



SAPIRANGA - RS

THE EVENT:

The Pan American Mountain Bike Downhill Championship will take place in Saporanga, in the state of Rio Grande do Sul, Brazil, from March 5 to 8, 2026.

The event will be valid for the UCI ranking, with points awarded according to the specific Union Cycliste Internationale (UCI) points table, and will be conducted in full compliance with the current UCI Regulations.

2. ORGANIZATION:

The Pan American Mountain Bike Downhill Championship is part of the Union Cycliste Internationale (UCI) International Calendar and is organized by Radical Sports in partnership with the Gaúcha Cycling Federation (FGC), with the sanction of the Pan American Cycling Confederation (COPACI) and the support and supervision of the Brazilian Cycling Confederation (CBC).

Below are the contact details of the Event Organizing Committee.

Function	Responsible	Email	Phone
Event Director	Marcos Lorenz	Radicalsport0@gmail.com	+55 (51) 99967-2742

3. EVENT SECRETARIAT:

The Event Secretariat, responsible for registration confirmation and kit distribution, will operate according to the schedule defined in the official timetable, at the event venue, located at Morro Ferrabraz.

04/03/2026	Wednesday	09h00 - 12h00	14h00 - 17h30
05/03/2026	Thursday	09h00 - 12h00	14h00 - 17h30
06/03/2026	Friday	08h00 - 12h00	

4. OFFICIAL HOTEL:

The Official Event Hotel is the Hotel das Rosas, which offers special rates for athletes, delegations, and accredited participants.

Additional information regarding the official hotel and accredited hotels is available in Annex I of this regulations document.

Address: Rua 7 de Setembro, nº 824 – Centro – Sapiiranga/RS

Phone: +55 (51) 3599-1709

WhatsApp: +55 (51) 99673-0537

5. TECHNICAL CONGRESS:

The Technical Congress will be held near the event venue, at Steinberg Ecovillage, on March 5, 2026, at 6:00 p.m.

The provisional event schedule is outlined in item 5 of this regulations document.

6. CATEGORIES:

6.1 - Official categories:

Official categories:

Elite Men: 19 years and over – 2007 and earlier

Junior Men: 2009 and 2008 - 17 to 18 años

Juvenile Men: 2011 and 2010 - 15 to 16 años

Master A Men: 1991 to 1987 – 35 to 39 years

Master B1 Men: 1986 to 1982 - 40 to 44 years
Master B2 Men: 1981 to 1977 - 45 to 49 years
Master C1 Men: 1976 to 1972 - 50 to 54 years
Master C2 Men: 1971 to 1967 - 55 to 59 years
Master D1 Men: 1966 to 1962 - 60 to 64 years
Master D2 Men: 1961 and earlier – 65 years and over
Elite Women: 19 years and over – 2007 and earlier
Junior Women: 2009 and 2008 - 17 to 18 years
Juvenile Women: 2011 and 2010 - 15 to 16 years
Master Women: 1991 to 1987 - 35 to 39 years

6.1.1 Categories and Results Recognition:

For UCI ranking and recognition purposes, only the results of athletes competing in the Junior and Elite categories will be considered, with separate results and awards per category. All other categories will have their results recognized by the Pan American Cycling Confederation (COPACI).

Licensed athletes must compete exclusively in their respective categories, according to their affiliation. If an athlete registers in an incompatible category, they will be automatically reassigned to the correct category.

6.2 - Unofficial categories:

Unofficial categories:

Cadete Men: 2013 and 2012 - 13 to 14 years

Infantil Men: 2015 and 2014 - 11 to 12 years

Escola Men: 2018 to 2016 - 8 to 10 years

Open Men: 2007 to 1992 - 19 to 34 years

Hardtail Men: Technical criteria

Cadete Women: 2013 and 2012 - 13 to 14 years

Infantil Women: 2015 and 2014 - 11 to 12 years

Escola Women 2018 to 2016 - 8 to 10 years

Open Women: 2007 to 1992 - 19 to 34 years

Athletes are not permitted to compete simultaneously in an official category and an unofficial category.

7. UNIFORMS:

The use of the official national team uniform is mandatory for athletes registered in the official categories of the 2026 Pan American MTB Downhill Championship.

8. PROVISIONAL SCHEDULE:

DATE	HOOR	ACTIVITY
Wednesday 04/03/2026	09h00 - 12h00	Registration confirmation and payment
	14h00 - 17h30	
Thursday 05/03/2026	09h00 - 12h00	Registration confirmation and payment
	11h00 - 12h00	Course inspection with the UCI
	14h00 - 17h30	Track walk – Cycling prohibited
	18h00	Technical congress at Steinberg Ecovillage
Friday 06/03/2026	08h00 - 12h00	Registration confirmation and payment
	08h00 - 10h00	Official training – Group A
	10h00 - 12h00	Official training – Group B
	13h00 - 15h00	Free official training
	15h00 - 17h00	Qualifying for unofficial categories
	18h00	Technical congress at the track – Villa Paiva
Saturday 07/03/2026	08h00 - 09h30	Official training – Group A
	09h30 - 11h00	Official training – Group B
	13h00 - 15h00	Qualifying for official categories
	15h00 - 17h00	Finals for unofficial categories
	17h30	Awards ceremony for the unofficial categories
Sunday 08/03/2026	08h00 - 09h30	Official training – Group A
	09h30 - 11h00	Official training – Group B
	12h00 - 16h00	Finals for official categories
	16h30	Final awards ceremony

Group A: Rígida, Escola Men/Women, Infantil Men/Women, Cadete Men/Women, Open Women, Juveniles Women, Master A Women, Master C1, C2, D1, D2 Men.

Group B: Elite Men/Women, Junior Men/Women, Juveniles Men, Master A, B1 e B2 Men, Open Men.

9. PRE-PAN 2026:

Location: Official Track of **Pan-Americano** DHI 2026

Registration fee: R\$ 150,00

DATE	HOUR	ACTIVITY
Sunday 01/03/2026	07h00 - 10h00	Registration confirmation and payment
	08h00 - 11h00	Free training
	13h00 - 15h00	Official timing - Awards for the top 50 times
	16h00	Official track closure of Pan-Americano



The DHI track will be closed on Monday, Tuesday, and Wednesday. No athletes will be allowed to train or ride bicycles on the course during these days.

10. Track Information:

Technical information about the course, as well as the track map and elevation profile, are available in **Annex III** of this regulations document.

11. Awards:

- **1st place** – Gold Medal and Champion Jersey Pan-Americano;
- **2nd place** – Silver Medal;
- **3rd place** – Bronze Medal;
- **4th place** – Medal;
- **5th place** - Medal.



The jerseys will be distributed only to the official UCI and COPACI categories.

12. NATIONS CLASSIFICATION:

Trophies will be awarded to the **nations finishing** in 1st, 2nd, and 3rd place.

In the **event of a tie**, the classification will be determined successively by the following criteria:

1. **Highest** number of gold medals;
If the tie **persists**, highest number of silver medals;
3. **If still tied**, highest number of bronze medals.

13. AWARDS CEREMONY:

The top **three finishers** in each category must attend the awards ceremony at the time established by the organization, as previously announced during the Technical Congress..

Athletes must appear on the podium wearing the **official competition uniform** and closed footwear.

The use of sunglasses, caps, hats, or any promotional items including banners, signs, or shirts other than the official national team uniform will not be permitted.

Athletes are **allowed** to carry their national flag during the ceremony.

13. ACCOMMODATION:

The list of accredited and partner hotels for the event is available in **Annex I** of this regulations document.

14. HOSPITALS AND MEDICAL SERVICES:

Brazilian athletes: the organization will provide valid insurance coverage for the event days; however, athletes are recommended to have their own supplementary insurance.

Foreign athletes: the organization will provide valid insurance coverage for the event days; however, athletes are required to obtain their own insurance, with international coverage.

Medical assistance will be provided by a **company contracted** by the organization. If hospital transfer is required, the athlete **will be referred** to a public hospital, unless a previous indication is made for a hospital covered by the athlete's insurance plan.

The list of hospitals in the municipality of Sapiroanga is available in **Annex II** of this regulations document.

15. ANTI-DOPING:

The event is subject to the UCI and ABCD (Brazilian Doping Control Authority) **Anti-Doping** Regulations.

16. APPEALS AND PENALTIES / SANCTIONS:

Appeals (protests) will only be accepted in **written** form, submitted through the official representative of the country, and must be filed within a maximum period of 15 (fifteen) minutes after the athlete's finish or the publication of the official results, as applicable.

Appeals will be accepted exclusively regarding classification positions and race times.

All other matters shall comply with the provisions of **Part I – General Organization of the Sport**, as well as the MTB and DHI Regulations of the CBC and the UCI.

Appeals will be reviewed by the **Panel of Commissaires**, whose decisions are final and not subject to appeal.

For penalty purposes, the sanctions table established in the **UCI Regulations** shall apply.

17. CASES NOT COVERED:

Cases not covered by this regulation will be decided by the **Panel of Commissaires** based on the CBC and UCI Regulations.

18. PANEL OF COMMISSAIRES:

Antonio Vink	Internacional	PR
Denildo Gomes	Nacional Elite	GO
Tiago Guedes	Nacional Elite	RJ
Herbert Reis	Nacional Elite	SE
Marilda Thimotheo	Nacional	PR

Annex I – List of hotels

Hotel das Rosas

- **Tel.:** +55 (51) 3599-1709 | WhatsApp: +55 (51) 99673-0537
- **E-mail:** reservas@hoteldasrosas.com.br
- Rua 7 de Setembro – Centro – Saporanga/RS
 - *(desconto para atletas participantes do Pan-Americano de DHI)*

Hotel Comoditá - 9,4km

- **Tel.:** 0800 696 7666
- R. Gen. Lima e Silva,42 – Centro – Saporanga/RS

▪ Hotel Vinte - 8km

- **Tel.:** +55 (51) 3559-5980
- Av. 20 de Setembro, 4882 - Sete de Setembro - Saporanga/RS

Hotel Suarez Campo Bom - 18,8km

- **Tel.:** +55 (51) 3038-3013
- Rua Carlos Cerino Feltes, 145 –Centro - Campo Bom/RS

Hotel Klein Ville Hotel - 19,1km

- **Tel.:** +55 (51) 3564-1569
- R. São José, 43 – Centro - DoisIrmãos/RS

▪ **Hotel Di Fratelli - 21,2km**

- **Tel.:** +55 (51) 3564-5874
- BR-116, 9301 – Primavera - DoisIrmãos/RS

RESTAURANTS:

▪ **Restaurante e Pizzaria Práticos**

- **Tel.:** +55 (51) 3599-3580
- R. Sete de Setembro, 321 – Centro – Saporanga/RS

▪ **Restaurante Spettacolo**

- **Tel.:** +55 (51) 3559-5077
- R. Carlos Biehl, 239 – Centro– Saporanga/RS

Xis do Vini

- **Tel.:** +55 (51) 3529-5505
- R. Pres. Kenedy, 295 – Centro – Saporanga/RS

▪ **Restaurante Chafariz**

- **Tel.:** +55 (51) 3559-1608
- Rodovia RS 239, 4051 - Santa Fé – Saporanga/RS

▪ **D'Juca Forno & Grill**

- Tel.:** +55 (51) 3529-1717
- R. Quinze de Novembro, 223 – Centro – Saporanga/RS

Annex II - List of public hospitals:

In the event of an accident, athletes will be referred to a public hospital, where they will receive initial medical care in accordance with the protocols of the Brazilian Unified Health System (SUS).

- **Hospital Municipal de Sapiranga**
 - **Rua Getúlio Vargas, 527 – Centro –Sapiranga/RS**
 - **Tel.: +55 (51) 3599 8100**

- **UPA Sapiranga**
 - Av. Mauá 3810 – Centenário –Sapiranga/RS**
 - **Tel.: +55 (51) 3959 1058**

Individual insurance or a health plan is mandatory.

For UCI / COPACI continental events, each athlete must hold and present a valid insurance policy at the time of signing the race sheet and collecting the event kit.

Annex III - The track

Circuit

- **Distance:** 1.600 metros
- **Altimetry:** 348 metros
- **Start:** Morro Ferrabraz – Rampa voo livre

Start

- **Finish/Podium:** Morro Ferrabraz –Villa Paiva

Finish

